



2025 Aerial Map

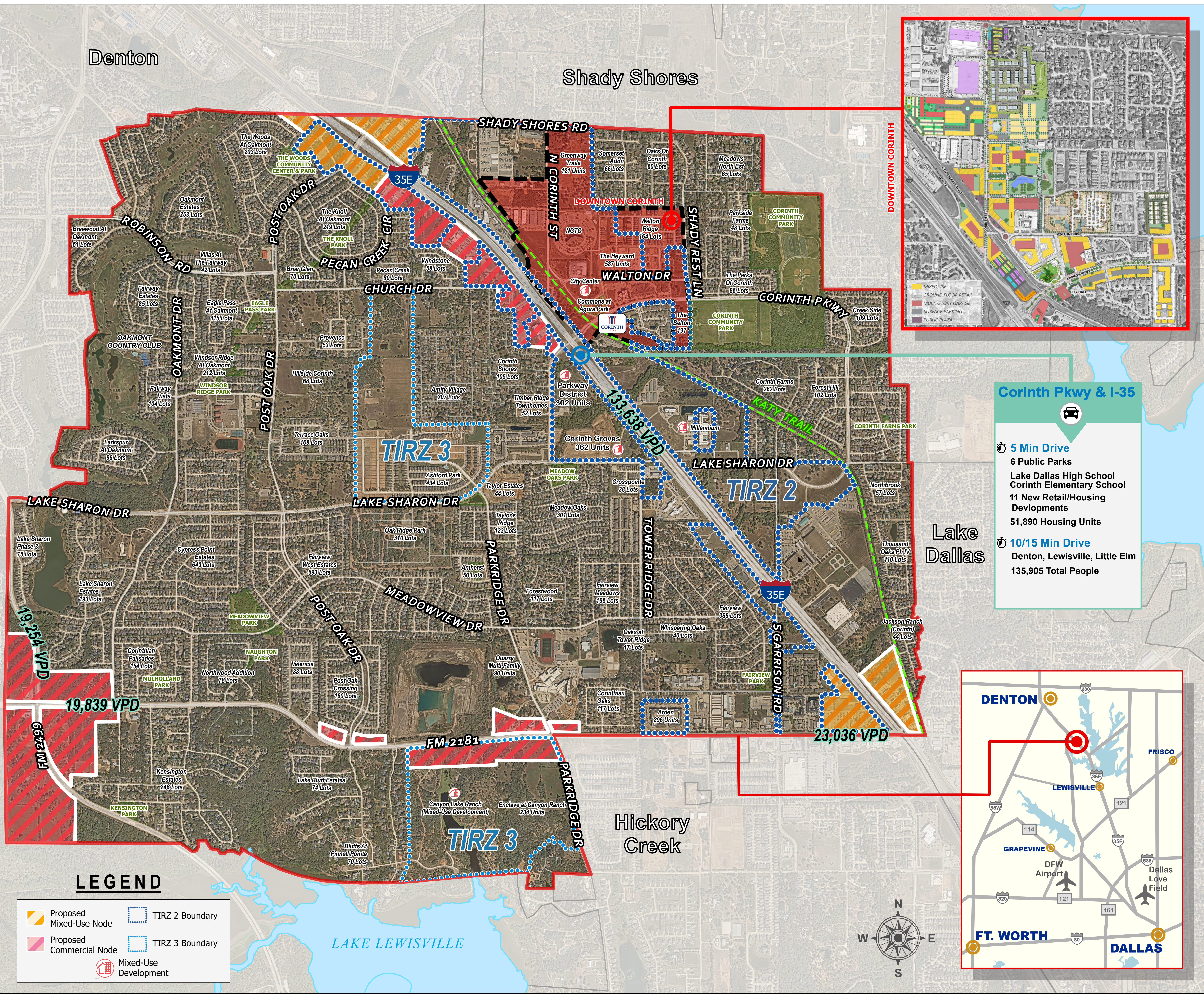
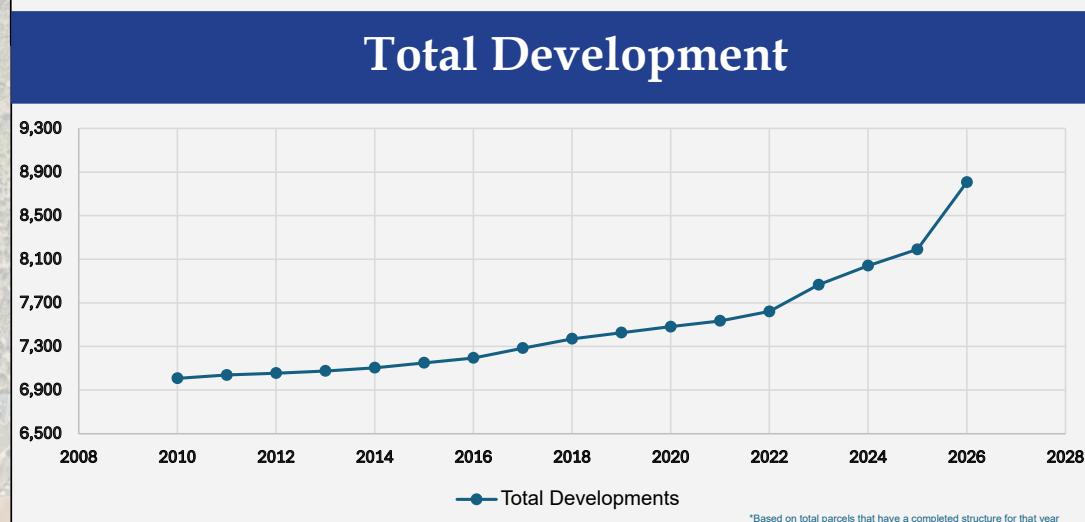
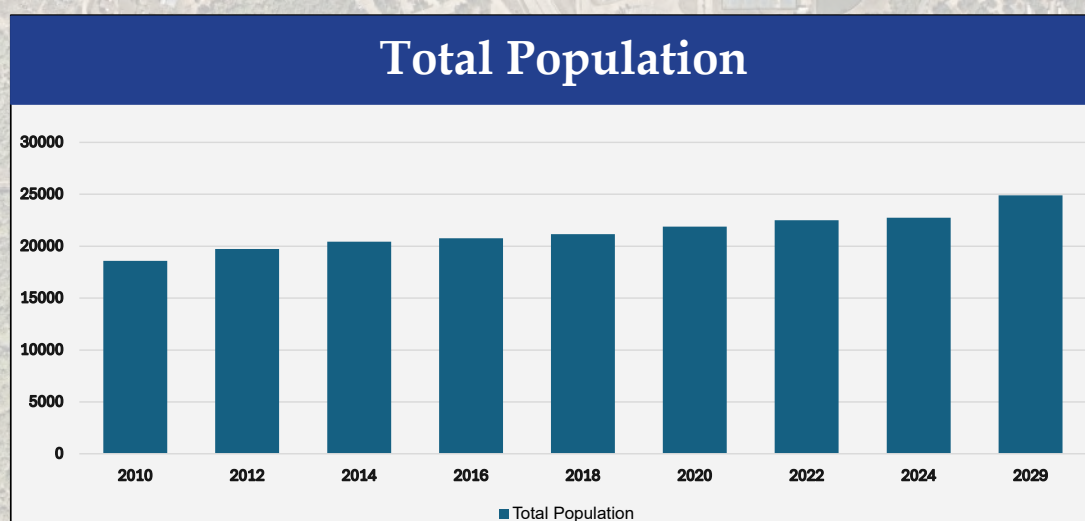
CORINTH AT A GLANCE

22,746 Total Population	45.1% Bachelor's Degree or Higher
39.3 Median Age	Lake Dallas ISD -Corinth Elementary -Lake Dallas High School
\$116,622 Median Household Income	Denton ISD -Hawk Elementary -Crownover Middle School
\$389,909 Median Home Value	10 Miles Bike/Hiking Trails
155 Acres Total Park Open Space	

OPPORTUNITIES	TRAFFIC COUNTS
366 Acres Mixed Use Development	19,839 VPD FM 2181/FM 2499 E/W
330 Acres Commercial/Retail Development	19,254 VPD FM 2181/FM 2499 N/S
	23,036 VPD FM 2181 W of I-35E
	133,638 VPD I-35E (2023)

IN THE VICINITY

25 Minutes to DFW Airport	10 Minutes to Denton
35 minutes to Love Field	40 Minutes to Dallas
30 Minutes to Ray Roberts Lake	45 Minutes to Fort Worth
5 Minutes to Lewisville Lake	UNT
6 Major League Sports Teams	TWU
	NCTC



Corinth Pkwy & I-35

- 5 Min Drive**
- 6 Public Parks**
- Lake Dallas High School
- Corinth Elementary School
- 11 New Retail/Housing Developments
- 51,890 Housing Units
- 10/15 Min Drive**
- Denton, Lewisville, Little Elm
- 135,905 Total People

LEGEND

Proposed Mixed-Use Node	TIRZ 2 Boundary
Proposed Commercial Node	TIRZ 3 Boundary
Mixed-Use Development	

